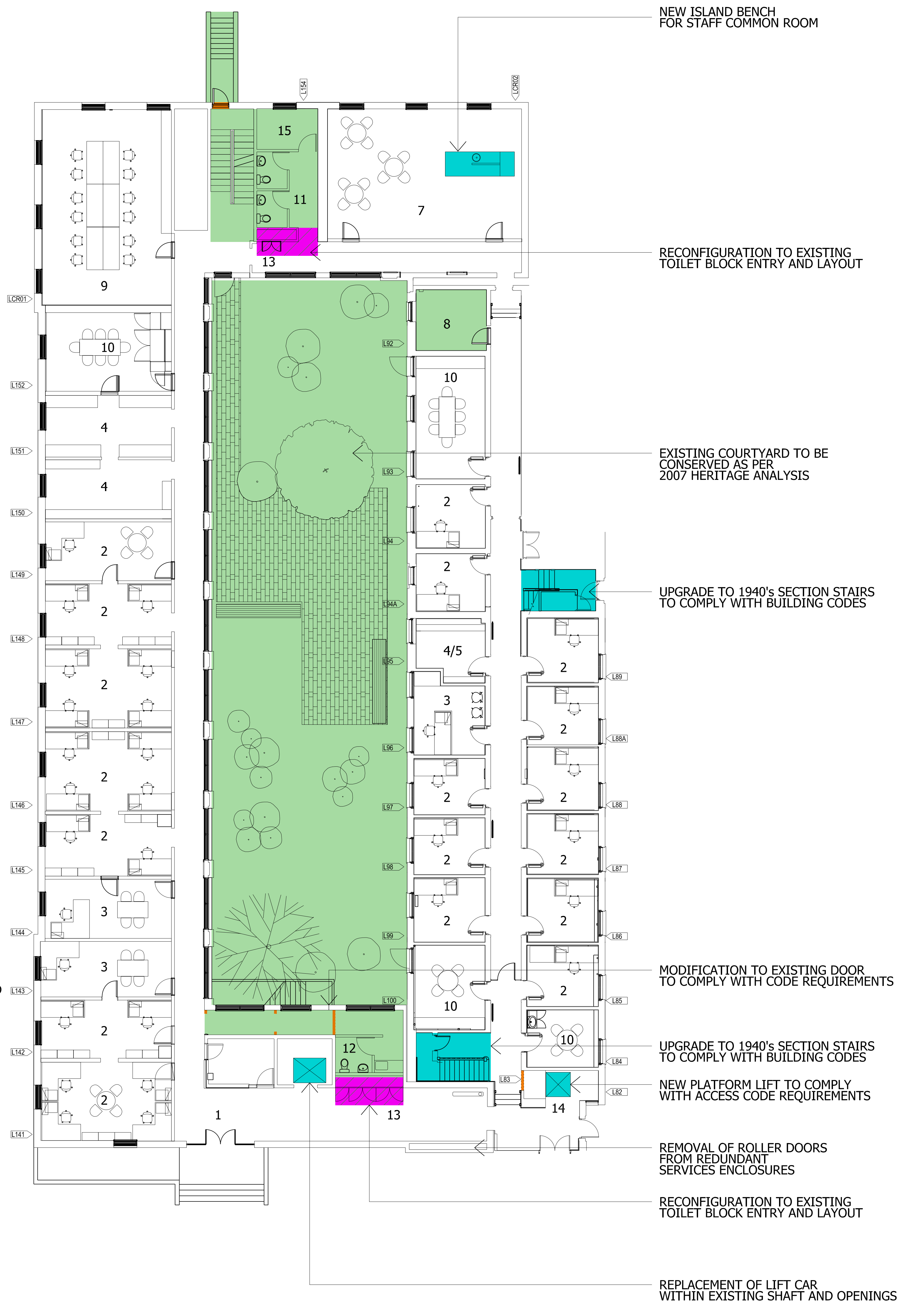
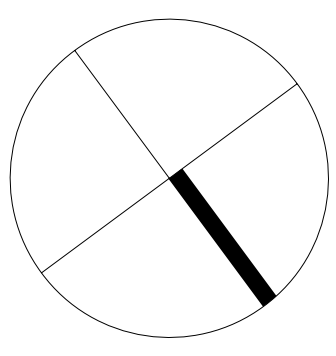


Attachment C
Floor Plans – Proposed Configuration



LEGEND

- EXTENT OF WALL REMOVAL
- WORKS PREVIOUSLY APPROVED IN REFERRAL EPBC 2008/3949
- PROPOSED NEW WORKS
- AMENDMENT TO WORKS PREVIOUSLY APPROVED

- 1 FOYER
- 2 STAFF ACCOMMODATION
- 3 OFFICE
- 4 STORE
- 5 WORK ROOM
- 6 MULTI PURPOSE ROOM
- 7 STAFF ROOM
- 8 PLANT ROOM
- 9 MEETING ROOM
- 10 SMALL MEETING ROOM
- 11 UNISEX TOILETS
- 12 DISABLED ACCESS TOILET
- 13 SERVICES CUPBOARDS
- 14 CHAIRLIFT
- 15 COMMUNICATIONS ROOM

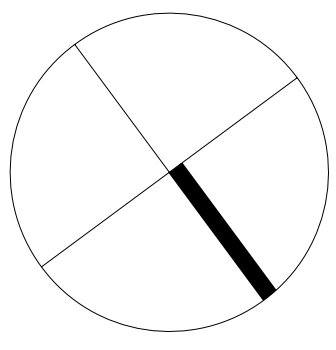
SOUTH EAST WING REFURBISHMENT - ADAPTIVE RE-USE

FLOOR PLAN - LOWER FLOOR - PROPOSED CONFIGURATION

OLD PARLIAMENT HOUSE
King George Terrace
PARKES ACT 2600
www.oph.gov.au

Scale 1:200@ A3
Revision C / 23 September 2008
Dwg. No. DEWR2_OPHSEW_A 201





LEGEND

- EXTENT OF WALL REMOVAL
- WORKS PREVIOUSLY APPROVED IN REFERRAL EPBC 2008/3949
- PROPOSED NEW WORKS
- AMENDMENT TO WORKS PREVIOUSLY APPROVED

- 1 FOYER
- 2 STAFF ACCOMMODATION
- 3 OFFICE
- 4 STORE
- 5 WORK ROOM
- 6 MULTI PURPOSE ROOM
- 7 STAFF ROOM
- 8 PLANT ROOM
- 9 MEETING ROOM
- 10 SMALL MEETING ROOM
- 11 UNISEX TOILETS
- 12 DISABLED ACCESS TOILET
- 13 SERVICES CUPBOARDS
- 14 ORAL HISTORY STUDIO
- 15 COMMUNICATIONS ROOM
- 16 READING ROOM
- 17 LIBRARY COLLECTION
- 18 RESOURCE CENTRE

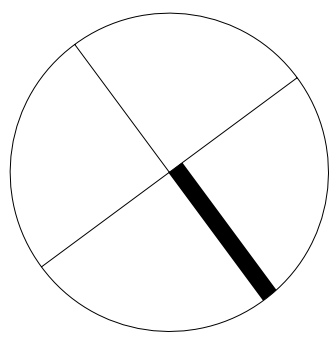
SOUTH EAST WING REFURBISHMENT - ADAPTIVE RE-USE

FLOOR PLAN - MAIN FLOOR - PROPOSED CONFIGURATION

OLD PARLIAMENT HOUSE
 King George Terrace
 PARKES ACT 2600
 www.oph.gov.au



Scale 1:200@ A3
 Revision C / 23 September 2008
 Dwg. No. DEWR2_OPHSEW_A 202



SOUTH EAST WING REFURBISHMENT - ADAPTIVE RE-USE

FLOOR PLAN - UPPER FLOOR - PROPOSED CONFIGURATION

OLD PARLIAMENT HOUSE
 King George Terrace
 PARKES ACT 2600
 www.oph.gov.au



Scale 1:200@ A3
 Revision C / 23 September 2008
 Dwg. No. DEWR2_OPHSEW_A 203